



NEURO LOGIC
SYSTEMS

CF-10 LCD 10" LCD in Rugged Metal Enclosure



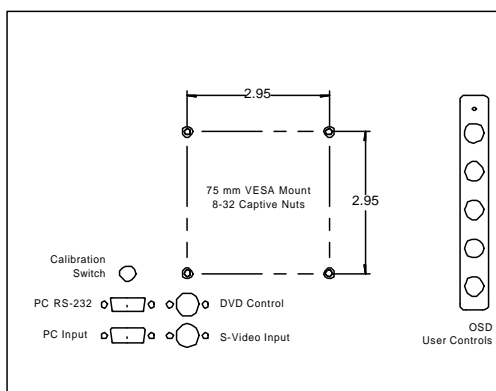
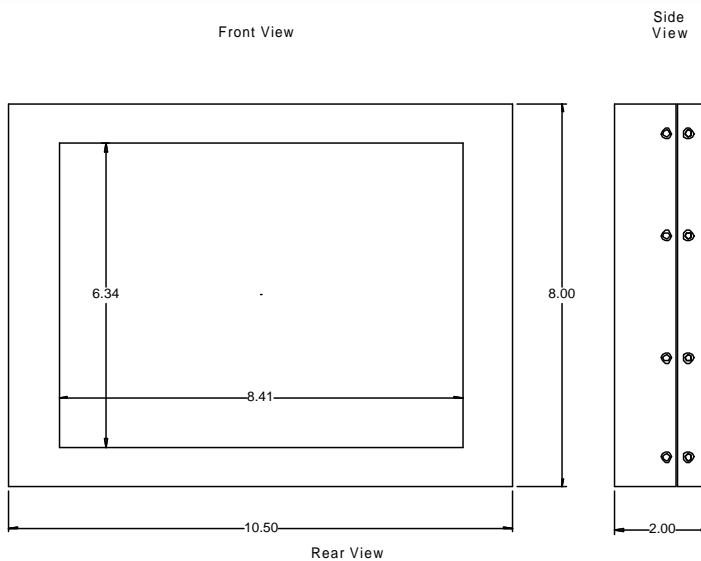
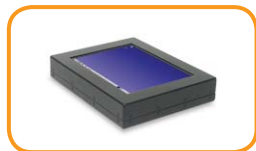
THE CF PRODUCT LINE CONSISTS OF FLATPANEL DISPLAYS ENGINEERED FOR USE IN HARSH, DEMANDING ENVIRONMENTS, INCLUDING SHIPBOARD AND MILITARY. NEURO LOGIC ONLY USES THE HIGHEST QUALITY LCDS AVAILABLE. ALL LCDS AND CONTROLLERS ARE CUSTOM BUILT TO NLS SPECIFICATIONS. THIS DOES NOT MEAN THEY ARE THE MOST EXPENSIVE EITHER! OUR PRODUCTS HAVE BEEN USED IN APPLICATIONS FROM MUSEUMS TO NETWORK ROOMS TO MILITARY VEHICLES TO MILITARY AIRPLANES.



KEY FEATURES

- Resistive, Surface Acoustic Wave (SAW), and Infrared Touchscreen (optional)
- 3mm heat-treated glass (on most models)
- 80-degree (up/down/left/right) viewing on all panels
- Rear-mounted OSD controls
- Backlight/Inverter Controls (optional)
- Fan-cooled electronics (optional)
- HD-10 - BNC or NTSC
- RGB Green Sync, RS-170, Y and C (S-video) thru BNC, NTSC, VGA
- DVI/Digital Video Interface (optional)
- Black powdercoat aluminum enclosure w/ handles
- Based on proven COTS LCD technology for low risk and high quality at an affordable cost
- Superior reliability & maintainability
- over CRTs means a lower life cycle cost
- NEMA 4 front option
- Mil-Spec 461E, 901 and 810 available
- 24 and 48 volt and 400Hz power supply options
- Custom modifications available on all models

CF-10 LCD: 10" LCD in Rugged Metal Enclosure



LCD TECHNOLOGY

LCD Technology:

- Active matrix TFT color LCD
- 10.4" diagonal screen size
- 800 x 600 addressable pixels
- 0.33mm pixel pitch
- 350cd/m² (typ.) brightness
- 250:1 (typ.) contrast ratio
- Tr: 25ms / Tf: 15ms (typ.)
- L/R=75° / 75°, U/D=55° / 55° viewing angle
- 30,000 hours life (min.)

Display Resolution:

800 pixels(H) x 600 lines(V)

Active Display Area: 211mm(H) x 1581mm(V)

Displayable Color: 262k colors

Horizontal Scan: 31.5kHz to 80kHz

Vertical Refresh: 56Hz to 75Hz

Pixel Frequency: 110MHz

Input Signal:

- Video: analog RGB 0.7 Vp-p
- Sync: separate sync, composite sync, sync. on green

Auto-adjustment: Yes

I/O Connectors:

- DC power in
- VGA in D-sub 15 pin

Power Consumption:

35 watt (max.), < 5 watt (off mode)

LCD Agency approval:

FCC-B, CE-B, VCCI-II, BSMI, CCIB, UL, CUL, TUV, CB, TCO' 99

Operating Temperature:

• 0°~40°C / 32°~104°F

• Humidity: 80% maximum

Storage Temperature:

• -20°~60°C / -4°~140°F

• Humidity: 95% maximum

www.NLSdisplays.com

Sales and Product : sales@nlsdisplays.com



451-C CONSTITUTION AVE. CAMARILLO, CA 93012
T 1.805.389.5435 | F 1.805.389.5436

NEURO LOGIC
SYSTEMS